



Multi-functional Bath Transfer System for use in home or facility without any bathroom modifications. All systems include anti-tippers.



ATTACHED ROLLING BASE OPTION FEATURES

- A rolling bath/shower positioning chair
- Anti-tippers for added safety and stability

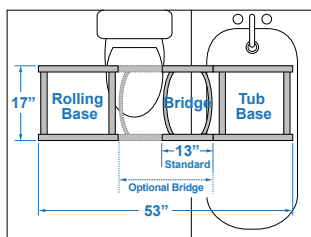


Tub Base Fits Inside Bathtub to allow Shower Door/Curtain to Close

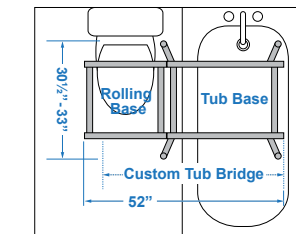
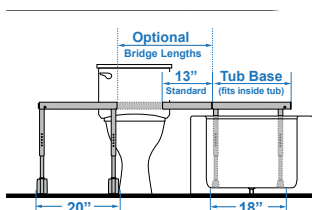


COMPACT TRANSFER BASE OPTION FEATURES

- Compact, 18" x 18", tub base transfer frame that fits inside bathtub
- Standard removable 13" bridge
- Optional fixed bridge in 9" or 11" lengths
- Optional adjustable bridges from 13 1/2" to 17 3/4" or 17 1/2" to 21 3/4" lengths
- Locking system for added safety



Transfer Base Diagram



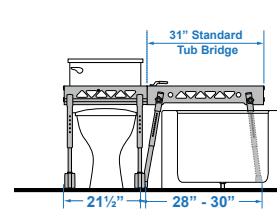
Transfer Base Diagram

Tub Base Folds for Storage



FOLDABLE TRANSFER BASE OPTION FEATURES

- Foldable tub base makes storage easy
- Chair locks into position once transfer is complete
- SLIDER SAFE™ Auto-Stop Safety System™ keeps chair from coming off base





ORDER FORM **FAX TO 905-787-8550 OR SUBMIT ONLINE**

Dealer: _____ Marked For: _____ Account #: _____





Date: _____ PO#: _____ Ordered By: _____

Phone: _____ Fax: _____ E-mail: _____

Ship to address: _____

UNIT	FOLDABLE TRANSFER BASE				COMPACT TRANSFER BASE	
Beach Bubble 	BTUAC-5135M-BB	BTUAC-5145L-BB	BTUAF-5130M-BB	BTUAF-5140L-BB	BTUAC-5131M-BB	BTUAC-5141L-BB
Blue	BTUAC-5135M-LL	BTUAC-5145L-LL	BTUAF-5130M-LL	BTUAF-5140L-LL	BTUAC-5131M-LL	BTUAC-5141L-LL
Lionfish 	\$3,699.00	\$3,793.50	\$7,087.50	\$7,087.50	\$7,087.50	\$7,087.50
Lavender						
SELECT TO ITEMIZE			BTUAF-5130M-XX-IT \$3,780.00 <input checked="" type="checkbox"/> BTF-K5113 \$3,307.50	BTUAF-5140L-XX-IT \$3,780.00 <input checked="" type="checkbox"/> BTF-K5113 \$3,307.50	BTUAC-5131M-XX-IT \$3,780.00 <input checked="" type="checkbox"/> BTC-K5101 \$3,307.50	BTUAC-5141L-XX-IT \$3,780.00 <input checked="" type="checkbox"/> BTC-K5101 \$3,307.50
Product Size	M	L	M	L	M	L
Weight Capacity	160 lb	180 lb	160 lb	180 lb	160 lb	180 lb
Seat Depth	14"	17"	14"	17"	14"	17"
Inside Seat Width	14"	16"	14"	16"	14"	16"
Back Height	26"	30"	26"	30"	26"	30"
Calf Length	13.5"	15.5"	13.5"	15.5"	13.5"	15.5"
Seat Height Range	23.5" - 30.5"	23.5" - 30.5"	26" - 30"	26" - 30"	26.5" - 29.5"	26.5" - 29.5"
Rolling Base Dimension	21"W X 19.5"D	21"W X 19.5"D	21.5"W x 21"D	21.5"W x 21"D	20"W x 17"D	20"W x 17"D
Rolling Base Inside Width	16"	16"	16"	16"	17"	17"
Rolling Base Height	17" - 21"	17" - 21"	15.5" - 19.5"	15.5" - 19.5"	15.5" - 18.5"	15.5" - 18.5"
Tub Base Width at Top			31"	31"	20"	20"
Tub Base Footprint Width			28" - 30"	28" - 30"	18"	18"
Tub Base Footprint Depth			31" - 33"	31" - 33"	17"	17"
Tub Base Height			13.5" - 19"	13.5" - 19"	14" - 17"	14" - 17"
Overall Length			52"	52"	53"	53"

OPTIONAL SEAT CUSHION & TRANSFER BASE BRIDGE						
Vinyl Seat Cushion	BTUA-A5566M \$918.00	BTUA-A5566L \$918.00	BTUA-A5566M \$918.00	BTUA-A5566L \$918.00	BTUA-A5566M \$918.00	BTUA-A5566L \$918.00
Hip Pad* (price per pad) Must select bracket below	BTUA-A5581M \$263.26	BTUA-A5581L \$290.25	BTUA-A5581M \$263.26	BTUA-A5581L \$290.25	BTUA-A5581M \$263.26	BTUA-A5581L \$290.25
Swing-Away Hip Bracket (price per bracket)	BTUA-A5572 \$297.00	*Requires 2 per chair	BTUA-A5572 \$297.00	*Requires 2 per chair	BTUA-A5572 \$297.00	*Requires 2 per chair
Adjustable Bridge (Compact Base Only)					BTV-A5104 BTV-A5105 \$1,208.25	Length: 13.5" - 17.75" Length: 17.5" - 21.75"
Fixed Bridge (Compact Base Only)					BTV-A5109 \$627.25 BTV-A5111 \$715.50	Length: 9" Length: 11"

ACCESSORIES (fit all sizes of bath chair unless noted)						
Footrests (if seat to footrest is > 16")	\$486.00	BTZ-A5125				
	\$486.00	BTZ-A5525				
Detachable Armrests	\$668.25	BTZ-A5051				
Seat Angle Bracket (raise seat front 2.5" - 3.5")	\$162.00	BTZ-A5126				
Head Support Pad	\$209.25	BCZ-A8875-BB 			BCZ-A8875-LL 	
Lateral Support Pads	\$209.25	BCZ-A8830-BB 			BCZ-A8830-LL 	
Positioning Belt (for use on mesh cover)	\$87.75	BCZ-A8835-G				
Pelvic Positioning Belt	\$114.75	BCZ-A8834				
Rapid Dry Positioning Belt (can be used as pelvic and/or lap belt)	\$330.75	BCZ-A8836M	Fit range: 22"-68"		BCZ-A8836L	Fit range: 25"-72"