



Multi-functional Bath Transfer System for use in home or facility without any bathroom modifications. All systems include anti-tippers.



ATTACHED ROLLING BASE OPTION FEATURES

- A rolling bath/shower positioning chair
- Anti-tippers for added safety and stability



Tub Base Fits Inside Bathtub to allow Shower Door/Curtain to Close

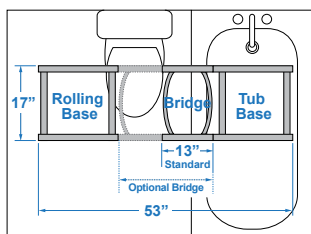


Tub Base Folds for Storage

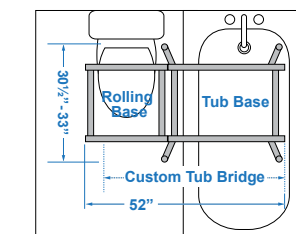
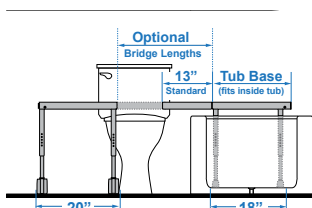


COMPACT TRANSFER BASE OPTION FEATURES

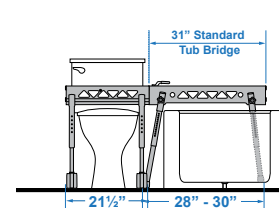
- Compact, 18" x 18", tub base transfer frame that fits inside bathtub
- Standard removable 13" bridge
- Optional fixed bridge in 9" or 11" lengths
- Optional adjustable bridges from 13½" to 17¾" or 17½" to 21¾" lengths
- Locking system for added safety



Transfer Base Diagram



Transfer Base Diagram



FOLDABLE TUB BASE OPTION FEATURES

- Foldable tub base makes storage easy
- Chair locks into position once transfer is complete
- SLIDER SAFE™ Auto-Stop Safety System™ keeps chair from coming off base

