



12" W wheelchair only available in Red

**FEATURES**

- Available in Two Seat Widths - 12" and 14"
- Standard Transit Tie Down Brackets
- WC19 Compliant when used with WB8021 for users between 50 and 80 lbs.
- Height adjustable push handles
- Flip back padded desk arms
- Pelvic belt standard
- Push to lock wheel locks
- 22" Rear wheels with 6" front casters
- Swingaway footrests with tool free height adjustment and calf strap



14" W wheelchair only available in Blue

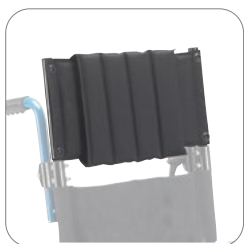


Flip-Back Padded Desk Length Arms



Push-to-Lock Brakes

**ACCESSORIES**



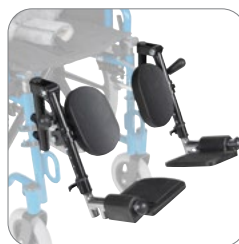
Headrest Extension



Chest Harness



Ankle Positioners



Elevating Legrests



Anti-Tippers

## ORDER FORM **FAX TO 310-305-1718 OR SUBMIT ONLINE**

Dealer: \_\_\_\_\_ Marked For: \_\_\_\_\_ Account #: \_\_\_\_\_

Date: \_\_\_\_\_ PO#: \_\_\_\_\_ Ordered By: \_\_\_\_\_

Phone: \_\_\_\_\_ Fax: \_\_\_\_\_ E-mail: \_\_\_\_\_

Ship to address: \_\_\_\_\_

BASE UNIT	\$605.00	WB1200-2GFR	WB1400-2GJB
Seat Dimensions		12" W x 12"D	14"W x 14"D
Weight Capacity		150 lb	150 lb
Weight Capacity with Transit Option		50 - 80 lb	50 - 80 lb
Overall Open Width		20"	22"
Overall Closed Width		12"	12"
Seat-to-Floor Height		19"	19"
Seat-to-Footrest Height		13" - 16"	13" - 16"
Back Height		14"	14"
Push Handle Height		33" - 39"	33" - 39"
Armrest Height		7"	7"
Overall Legth with Footrests		37"	39"
Overall Length without Footrests		28.5"	30.5"
Product Weight with Footrests		37 lb	37 lb
Product Weight without Footrests		33 lb	33 lb
HCPCS Code		E1236	E1236

HCPCS codes are not intended to be, nor should be considered billing or legal advice. Providers are responsible for determining the appropriate billing codes when submitting claims. Referenced HCPCS codes are also not guarantee of payment.

ACCESSORIES							
Headrest Extension	E0966	\$105.60	WB 8021		WB 8021		
Contoured Chest Harness, Neoprene (must choose harness attachment kit)	K0108	\$145.00	PCH-340XS Width: 5.25"	PCH-340S Width: 5.75"	PCH-340S Width: 5.75"	PCH-340M Width: 6.5"	
Harness Attachment Kit (required for harness)		\$155.00	PHA-100S		PHA-100L		
Padded Pelvic Belt, Two Point Center Pull (padded length)	K0108	\$85.00	PPB-100PBXS 12.25" - 15"	PPB-100PBS 14" - 17.5"	PPB-100PBS 14" - 17.5"	PPB-100PBM 18" - 22"	
Poziflex Chest Strap (padded strap dimension: L x W)	K0108	\$90.00	PCB-900XS 3" x 12.5"	PCB-900S 3.75" x 15.75"	PCB-900S 3.75" x 15.75"	PCB-900M 4.25" x 18.75"	
Ankle Positioners, Side Release (ankle circumference)	K0108	\$130.00	PAP-200XS 5" - 7"	PAP-200S 6" - 7.5"	PAP-200S 6" - 7.5"	PAP-200M 7" - 9"	
Elevating Legrests	E0990	\$176.00	WB ELR		WB ELR		
Anti-Tippers	E0971	\$81.90	STDS833N		STDS833N		