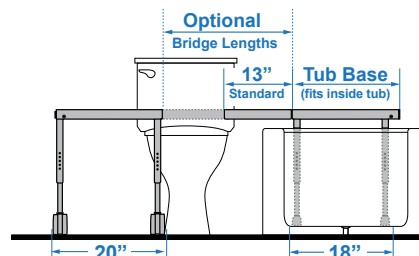
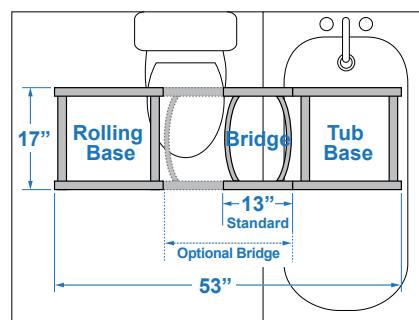


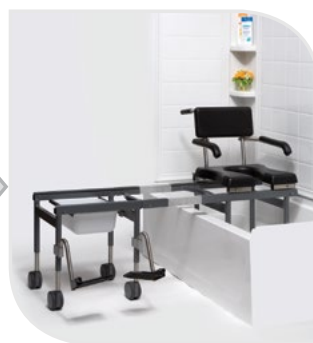
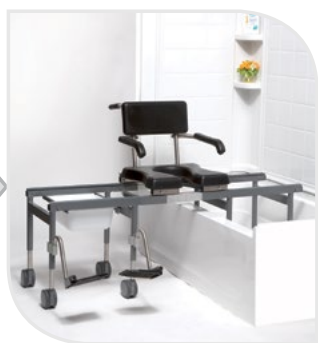
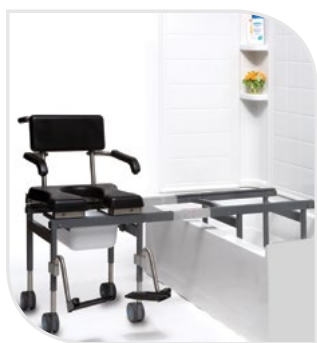


### FEATURES

- Compact, 18" x 18", tub base transfer frame that fits inside bathtub
- Standard removable 13" bridge
- Optional fixed bridge in 9" or 11" lengths
- Optional adjustable bridges from 13½" to 17¾" or 17½" to 21¾" lengths
- Locking system for added safety
- Includes headrest, commode pail, footrests and locking casters



Transfer Base Diagram



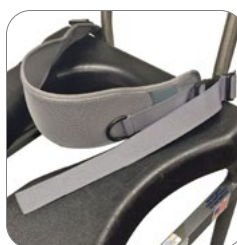
### ACCESSORIES



Fixed-Length Bridge



Adjustable-Length Bridge



Rapid Dry Positioning Belt



Lap Belt

## ORDER FORM

FAX TO 310-305-1718 OR SUBMIT ONLINE

Dealer: \_\_\_\_\_ Marked For: \_\_\_\_\_ Account #: \_\_\_\_\_

Date: \_\_\_\_\_ PO#: \_\_\_\_\_ Ordered By: \_\_\_\_\_

Phone: \_\_\_\_\_ Fax: \_\_\_\_\_ E-mail: \_\_\_\_\_

Ship to address: \_\_\_\_\_

## BUNDLED

\$4,585

## BTV-5100

## SELECT TO ITEMIZE

Seating	\$1,465		BTV-5100-IT
Base	\$2,450	<input checked="" type="checkbox"/>	BTC-K5101
Armrests	\$310	<input checked="" type="checkbox"/>	BTV-K5105
Footrests	\$360	<input checked="" type="checkbox"/>	BTV-K5125

Weight Capacity	300 lb
Seat Width	19"
Seat Depth	18"
Seat Opening	9"W x 14.5"L
Seat Height Range	24.5", 25.25", 26", 26.75", 27.5"
Back Height	15"
Back Width	16.5"
Maximum Top of Tub Clearance Height	20.5"
Overall Length	53"
Tub Base Dimensions	18"W x 17"D
Rolling Base Dimensions	20"W x 17"D
Tub Base + Bridge Weight	20 lb
Chair + Rolling Base Weight	40 lb

## ACCESSORIES

Fixed-Length Bridge	9"	\$465	BTV-A5109
	11"	\$530	BTV-A511
Adjustable-Length Bridge	13.5" - 17.75"	\$895	BTV-A5104
	17.5" - 21.75"	\$895	BTV-A5105
Lap Belt		\$70	BTV-A5135
Rapid Dry Positioning Belt	Fit Range: 22" - 68"	\$286	BCZ-A8833M
	Fit Range: 25" - 72"	\$286	BCZ-A8833L