

Ultima™ Access™ Instructions

Stainless Steel Bath Chair with multiple seat, back and leg adjustments

Model Numbers:

BCUA-8626M (up to 130 lb/59 kg weight capacity)

BCUA-8726L (up to 160 lb/73 kg weight capacity)

BCUA-8926XL (up to 180 lb/82 kg weight capacity)



ATTENTION

Your Ultima Access Stainless Steel Bath Chair has been built to the highest standards of quality to ensure years of superior service. Please take the time to read this informative instruction guide and pay particular attention to the safety information provided.

Here are some additional precautions you can take to prevent the risk of injury:

1. Read and understand ALL instructions.
2. Determine, with a physician or therapist, the suitability of this product for the intended user.
3. **To reduce the risk of injury or drowning, NEVER leave the user unsupervised or unattended while using this product.**
4. Check regularly that all tubing, bolts, buckles, and other parts are tight at ALL times.
5. When occupied, make sure the user is buckled in at all times.
6. Chair legs should NEVER be in complete vertical positions.
7. **SAVE THESE INSTRUCTIONS.**

If you require additional assistance, please contact Inspired by Drive Customer Service at (800) 454-6612, or email info@inspiredbydrive.com.

Thank you for choosing Inspired by Drive.

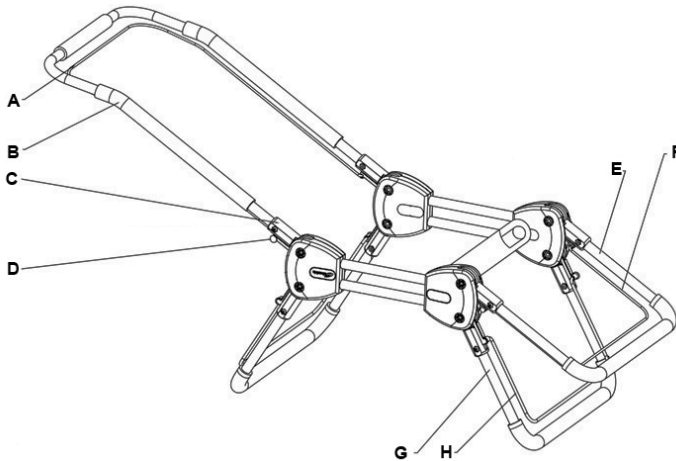
ACCESSORIES

To order accessories for your Ultima Access bath chair, please contact customer service at **(800) 454-6612**, or send an email to **info@inspiredbydrive.com**.

ACCESSORIES (CONTINUED)



ASSEMBLY OF CHAIR



- | | |
|---------------------------------------|---|
| A - Back angle adjustment pull handle | F - Calf angle adjustment pull handle |
| B - U-shaped back support frame | G - Leg frame (can be positioned at 0°, 30°, 60° angles, relative to seat's horizontal plane) |
| C - Insertion point for back frame | H - Leg frame adjustment pull handle |
| D - Back angle adjustment pull tab | |
| E - U-shaped calf support frame | |

Assembling the Back Support:

1. One by one, pull on each of the pull tabs and change the pivot angle to vertical (Fig. 1). Insert the U-shaped stainless steel back and calf frames into the pivots and fasten with bolts and nuts provided.
2. Insert the ends of the angle adjustment pull handles into the small holes located on the pull tab on each side of the frame (Fig. 2).

Firmly press the stainless steel caps over the ends of the pull handle. Please ensure that the end cap fits tightly over the groove on the pull handle. Test it by tugging at the cap. If it comes off, then reinstall.

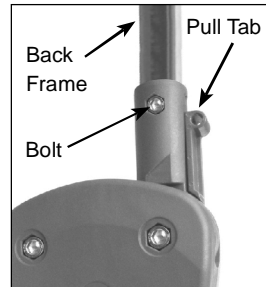


Figure 1

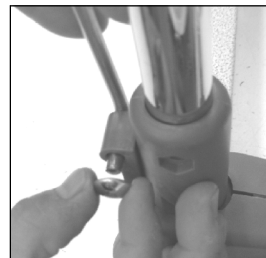
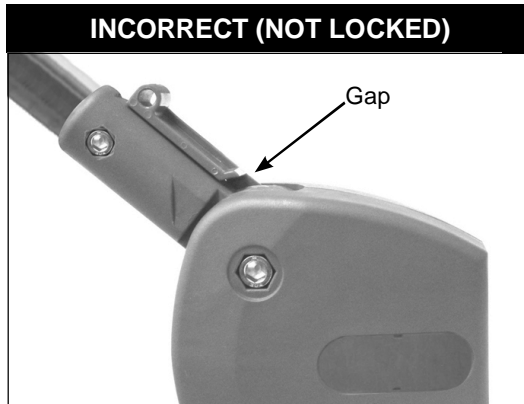
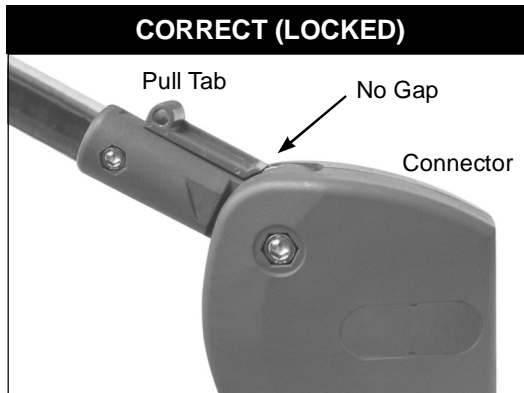


Figure 2

PROPER ASSEMBLY CHECK

Before each use of your bath chair, please verify that the back and calf supports are properly installed and locked into position. When correctly installed, the pull tab should click into place and completely engaged into the slot. There should not be a gap between the pull tab and connector. See the figures below.



ATTENTION

Adjustments to the Ultima™ Access™ SHOULD NOT be made while the product is in use or occupied.

COVER INSTALLATION AND ANGLE SETTINGS

Cover Installation: (refer to chair diagram on page 4)

- Pull on the back angle adjustment pull handle (A) to set the backrest support to the most upright position (Fig. 3). Slip cover over the back rest and adjustment pull handle (Fig. 4). Wrap the velcro straps around the seat frame and secure underneath the seating (Fig. 5).

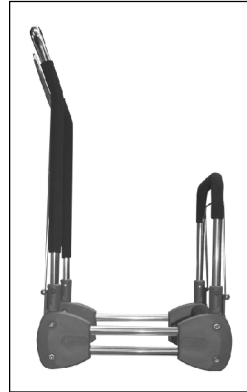


Figure 3

Adjusting Back Angle:

1. Locate the adjustment pull handle (A) on the back of the chair under the cover (it is not necessary to remove the cover to operate the lever). Using both hands, grip the lever and back frame and squeeze together.

2. With a lifting motion, adjust the back angle up or down.

NOTE: Back angle should not be adjusted when the chair is occupied.

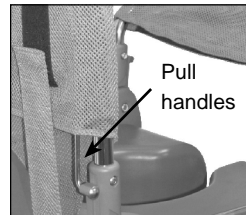


Figure 4

Adjusting Calf Support Angle:

1. On the calf support frame, under the cover, locate the adjustment pull handle (F). It is not necessary to remove the cover. Using both hands, grip the pull handle and calf support frame and squeeze together.
2. With a lifting motion, adjust the angle up or down.

Note: The legs can be positioned at 0° (horizontal), 30°, and 60° angles (relative to the seat's horizontal plane).

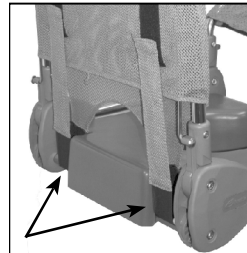


Figure 5

⚠ WARNING

The legs SHOULD NEVER be in a complete 90° angle (perpendicular to the seat's horizontal plane). Leg angles greater than 60° will cause the chair to be unstable.

SEAT INSTALLATION

Push the rear of seat cushion on the back support frame, pull the front of the cushion forward and push down to snap on the front frame.

CLEANING INSTRUCTIONS

Soapy water or mild cleansers may be used on all parts of your Ultima Access Bath Chair. Harsh abrasive cleansers may dull the finish.

FABRIC CARE

The fabric cover for Ultima Access Bath Chair is made of polyester that is durable, antimicrobial, resilient, quick drying, fade resistant, and machine washable.

Cleaning Instructions:

1. Remove the chair cover by following these steps below:
 - Adjust the back and calf support frames to horizontal. Turn the chair up-side down and remove velcro strap.
 - Slip the cover over the back and calf supports.
2. Using warm water (100°F/38°C) and household laundry detergent, wash the cover in the washing machine using gentle cycle.
3. Air dry.

MAXIMUM WEIGHT CAPACITY

To ensure the occupant's safety, DO NOT exceed the following maximum weight limits:

MODEL NO.	MAXIMUM WEIGHT CAPACITY
8626	130 lb. (59 kg)
8726	160 lb. (73 kg)
8926	180 lb. (82 kg)



11724 Willake Street
Santa Fe Springs, CA 90670
Toll Free: 800-454-6612
Direct: 562-282-0244
Fax: 310-305-1718

Website: www.inspiredbydrive.com
Email: info@inspiredbydrive.com

© 2017 Columbia Medical, LLC dba Inspired by Drive

Every Inspired by Drive product comes with our one year manufacturer's warranty. This warranty ensures that when you receive our products, they will arrive free of defects in material and workmanship. We will repair or replace any part or entire product at our discretion for a period of up to one year from the date of delivery to the original purchaser. This warranty does not include cost of inconvenience, shipping, property damage, misuse, abuse, accident, or similar incidents. The warranty will not apply if the product has been modified, tampered with, repaired by unauthorized individuals or assembled incorrectly. Custom orders are non-refundable and non-returnable.